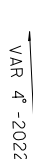
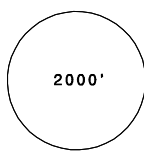
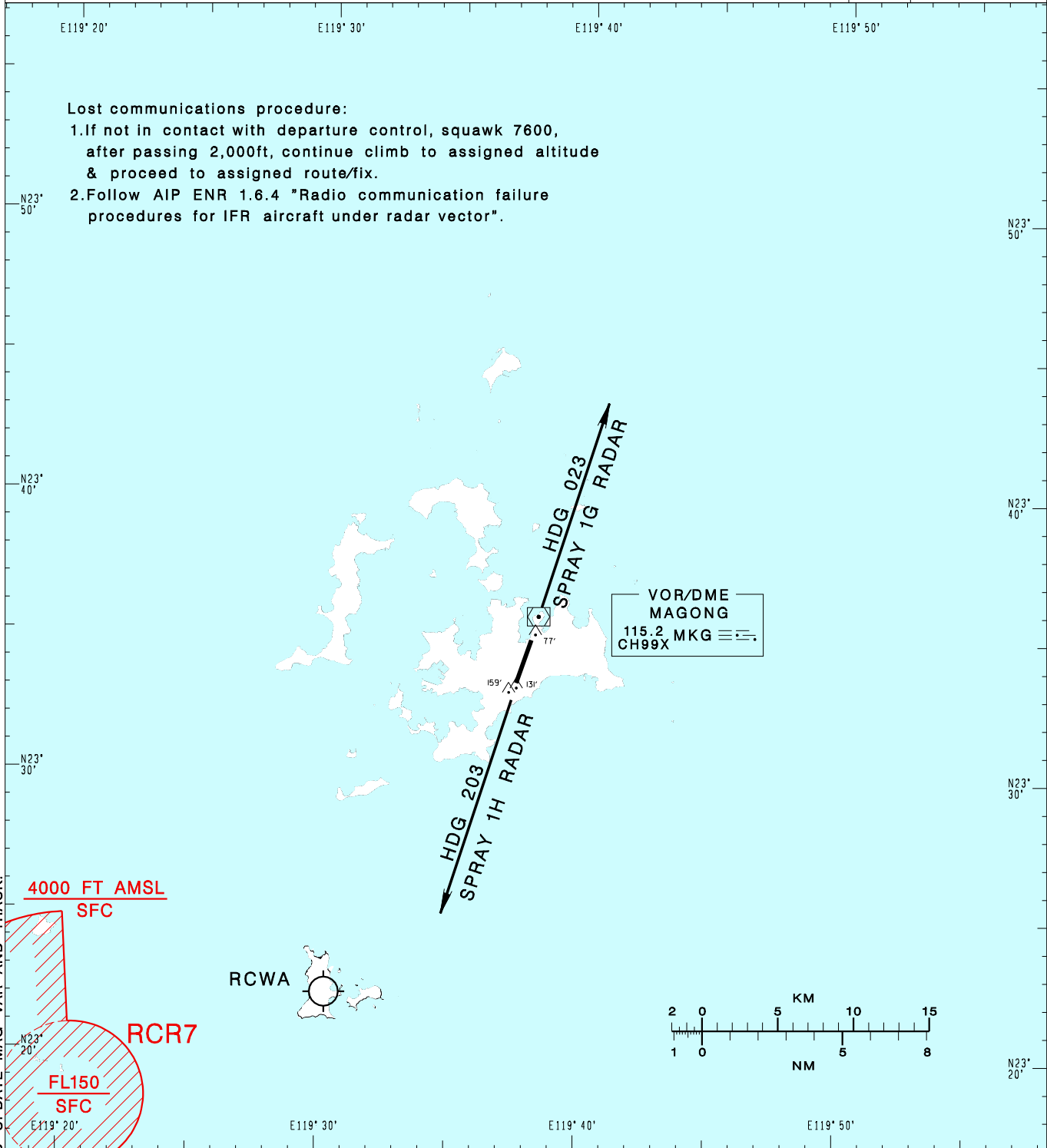


澎湖機場
PENGHU AD

RCQC SID
SPRAY 1G RADAR(RWY02)
SPRAY 1H RADAR(RWY20)

KAOHSIUNG APP 128.1 234.8	MAGONG TWR 118.3 236.6	ATIS 127.05	  MSA ARP 25NM	
Apt Elev: 103'		Trans Level: FL130		Trans Alt: 11,000'
BEARINGS ARE MAGNETIC; DISTANCES ARE NAUTICAL MILES; ELEVATIONS, HEIGHTS IN FEET				



CHANGES:RENAME AND UPDATE MAG VAR AND TRACK.

<p>SPRAY ONE GOLF RADAR DEPARTURE Climb on HDG 023 to ATC assigned altitude for vector to assigned route/fix.</p> <p>SPRAY ONE HOTEL RADAR DEPARTURE Climb on HDG 203 to ATC assigned altitude for vector to assigned route/fix.</p>	<p>NOTE Caution close-in obstacles (trees, poles & water tower): 159ft MSL, 794m & 131ft MSL, 292m south of THR02; 77ft MSL, 436m north of THR20.</p>
--	--